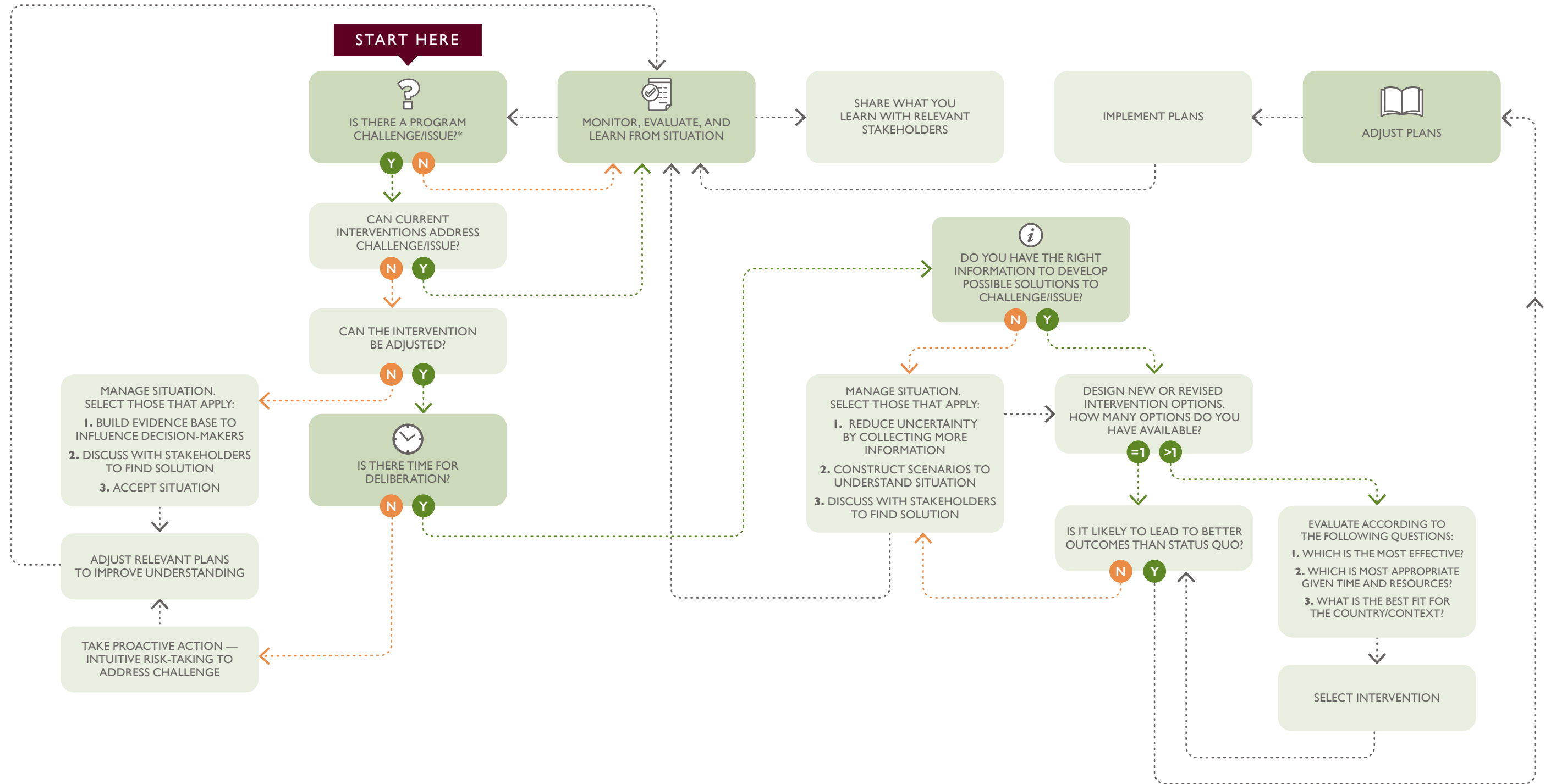


KNOWING WHEN TO ADAPT

DECISION TREE

This job aid will help you determine how best to resolve a challenge/issue in programming. It is intended for use by USAID, partners, and others working in international development.



* A program challenge can be either positive or negative in nature, such as adapting because of a contextual shift, responding to poor program performance, or attempting to understand positive deviance.