



CAPACITATING LOCAL PARTNERS ON DATA QUALITY IN MONITORING & EVALUATION THROUGH PARTICIPATORY PROCESS

**USAID UNEDAP ASIA REGIONAL EVALUATION
SUMMIT SEPTEMBER 11-12, 2013
BANGKOK THAILAND**

**ORLEN C. OCLEASA
ACDIVOCA**

USAID Data Quality Dimensions





- A 3 year project with \$ 5M funding from USDA
- CoCoPal is named after Cocoa, Coconut and *Palay* (rice)
- Aim to improve the income & food security of 25,000 farmers.
- Improve production & post-harvest processing facilities and practices
- Strengthen the value chains, and the role of smallholder farmers.
- It has four partners namely: CocoaPhil, PhilRice, PASFCO and LandCare Foundation



M&E Assessment of Project Partners

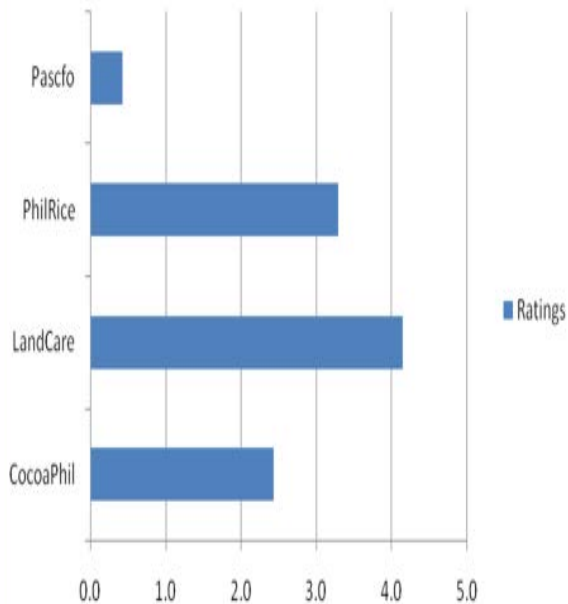
PURPOSE

1. Evaluate the existing M&E Systems and practices of the different project partners (PPs)
2. Assess their capacities in implementing M&E systems and practices of ACIDI/VOCA to their organizations
3. Determine the equipments /logistical needs for M&E
4. Determine their training needs for M&E planning and implementation
5. Conduct inventory of their data base and information storage
6. Gather secondary data from partners.

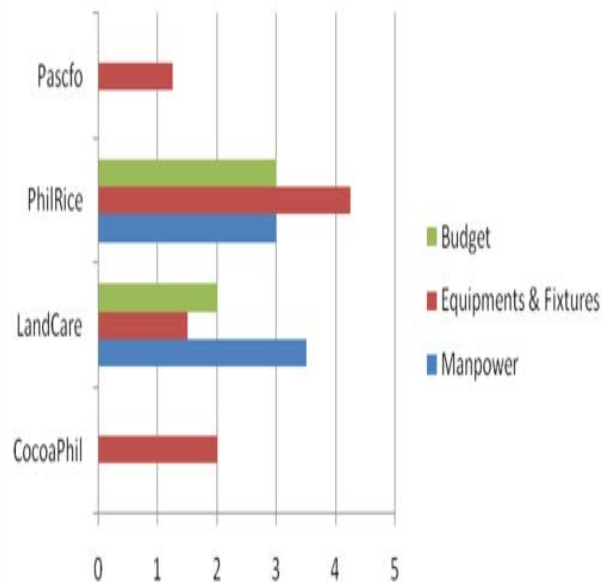


RESULTS OF JOINT ASSESSMENT

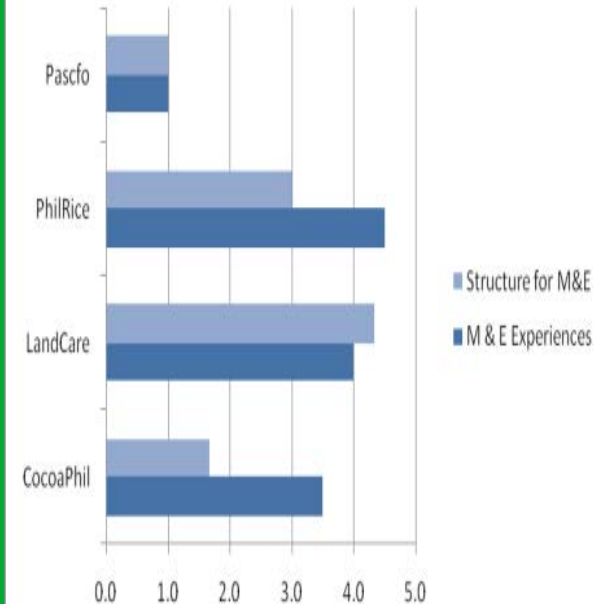
M & E Planning



M & E Resources



M&E Experiences & Structure



SCORE RATING SYSTEM

5 -Working Very well/ Done very well

4- Working but lacking/insufficient / Done but there are few things not implemented

3- Working but needs a lot of improvement / Done but not very well, many are lacking

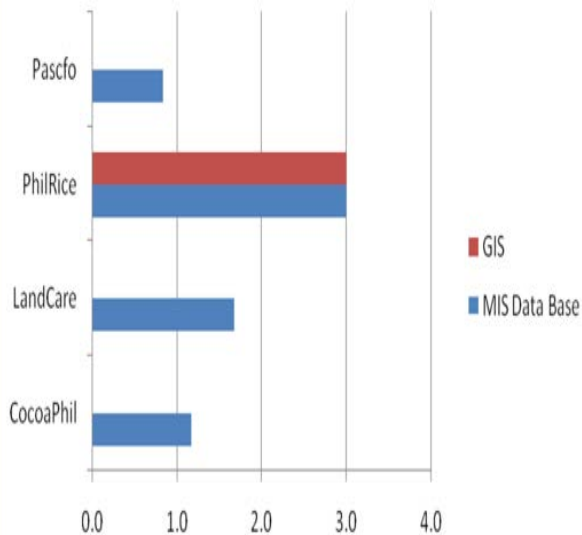
2- Working sometimes/ rarely/ Not Working Most of the Time / Done but it didn't t worked

1 Not working / Present but nothing has been done

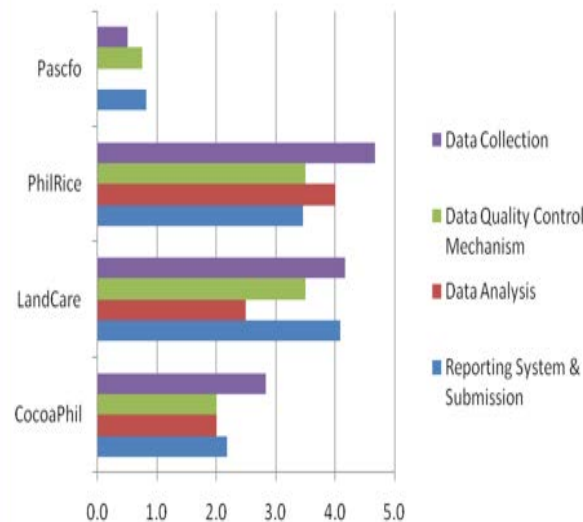
0- None/ Nil / Zero/ Not there at all

RESULTS OF JOINT ASSESSMENT

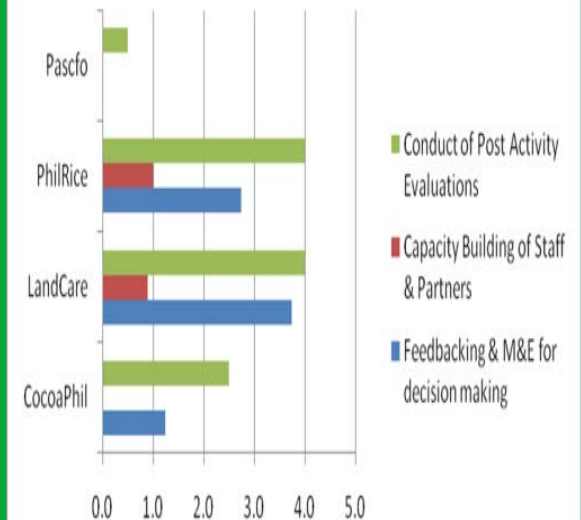
MIS Data base & GIS Installed



Data Collection, Quality Control, Analysis & Reporting



Other M&E Practices



SCORE RATING SYSTEM

5 -Working Very well/ Done very well

4- Working but lacking/insufficient / Done but there are few things not implemented

3- Working but needs a lot of improvement / Done but not very well, many are lacking

2- Working sometimes/ rarely/ Not Working Most of the Time / Done but it didn't t worked

1 Not working / Present but nothing has been done

0- None/ Nil / Zero/ Not there at all

Midterm Data Management Assessment

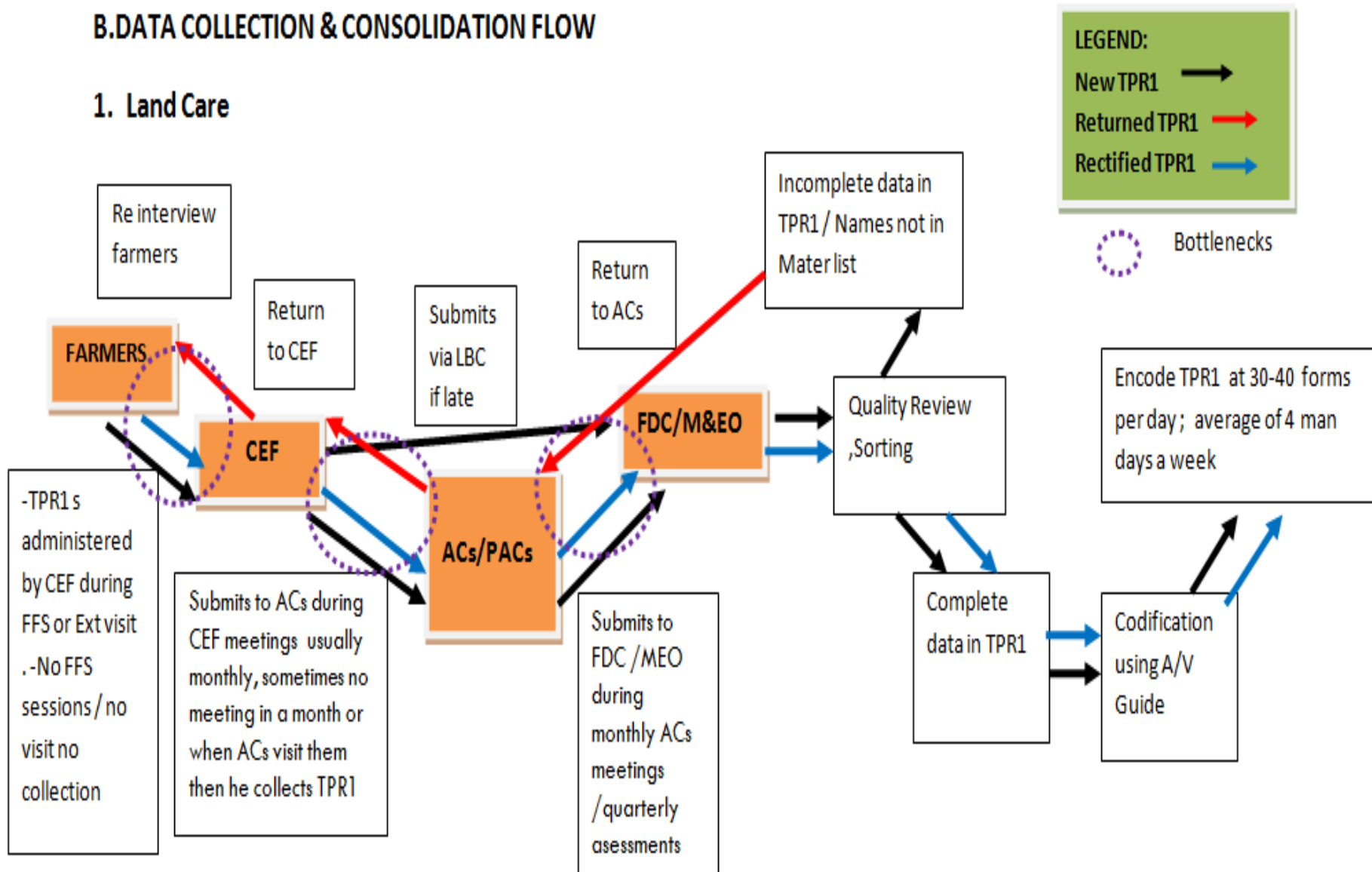
PURPOSE

1. Determine the practices on data collection system , consolidation and storage of the different partners
2. Identify the causes of the delayed data collection and build up particularly the farmers database
3. Track the of data flow among partners especially the bottlenecks
4. draw out recommendations and suggestions to fast track the data collection and encoding or the whole database built up.

RESULTS OF JOINT ASSESSMENT

B. DATA COLLECTION & CONSOLIDATION FLOW

1. Land Care



Participatory Data Quality Assessment

PURPOSE

1. To *VERIFY* the quality of reported data (such as completeness and correctness) in the Monitoring /Tracking system and that in the Database as well as the data source documents
2. To *IDENTIFY & IMPLEMENT* corrective measures with appropriate action plans to strengthen data management and reporting system and data archiving.
3. To *PREPARE* the project partners in future external audit which might be conducted by ACDI/VOCA HQ and USDA
4. To *COLLECT* directly the updated/latest versions of Database of project partners (PPs)

STEPS IN PARTICIPATORY DATA QUALITY ASSESSMENT

STEP:1

Interview the M&E Point Person / PPs Staff in charge



STEP:2

Jointly Check source documents - M&E capture forms, hard copies of reports & etc



STEP:3

Jointly Check database encoded – project partners' staff & ACDI VOCA M&E Manager



STEP:4

Jointly Countercheck /match data in source documents with the database



STEP:5

Answering & rating of checklists

-



LESSONS LEARNED

- Project Partners M&E capacity and needs assessment is necessary at the start of the project
- Aside from logistical support a continuing technical assistance like training should be given to local partners especially on data quality control
- A more frequent regular data quality assessment must be done to rectify whatever is need to correct in the data collection , transmission and encoding.

WORDS TO PONDER:
In building the capacity of our partners,
we need to balance everything.....



THANK YOU...